

Anchors Aweigh!

Experience Level: Intermediate

Design by Barbara Nowicki



Sail right through this project and add it as a special touch to your lake cabin. Or, crochet it as a birthday surprise for your young sailor!

Size

42½" x 52"

Materials

- Worsted weight yarn: 28 oz white and 5 oz each red and blue
- Size G/6 crochet hook or size needed to obtain gauge
- Size H/8 crochet hook or size needed to obtain gauge
- Tapestry needle
- Large size bobbins

Gauge

8 sc = 2 ¼" with smaller hook; 7 rows = 2"

7 sc = 2" with larger hook; 7 rows = 2"

To save time, take time to check gauge.

Pattern Note

Join rnds with sl st unless otherwise stated.

To change color, work st to last 2 lps on hook, pull new color through last 2 lps.

For small color areas, wind bobbins or small balls of colors, change to color in last sc of white and work over white until needed again, drop color.

For larger areas, use separate balls of

white and colors, do not work over color not in use.

Center Panel

Row 1: With white and larger hook, ch 83, sc in 2nd ch from hook and in each rem ch across, ch 1, turn. (82 sc)

Rows 2–80: Follow Chart A (page 14), working ch-1, turn at end of each row, at end of Row 80, fasten off.

Center Panel Border

Rnd 1: Attach white with a sl st in any corner st, ch 1, 3 sc in same st, sc evenly sp around, working 3 sc in each corner st, join in beg sc.

Rnd 2: Sl st in next sc, ch 2, [hdc, ch 1, 2 hdc] in same sc, hdc in each sc around, working [2 hdc, ch 1, 2 hdc] in 2nd sc of each corner 3-sc group, join in 2nd ch of beg ch-2.

Rnds 3–11: Sl st to corner ch-1 sp, ch 2, [hdc, ch 1, 2 hdc] in same sp, *skip next hdc, hdc in each rem hdc to next corner, [2 hdc, ch 1, 2 hdc] in corner ch-1 sp, rep from * around, join in beg ch-2, at end of Rnd 11 fasten off.

Sailboat Borders

Make 2

With blue and H hook, ch 113.

Rows 1–29: Beg with sc in 2nd ch from hook, follow Chart B (page 15), working ch 1 at end of each row, at end of Row 29, fasten off.

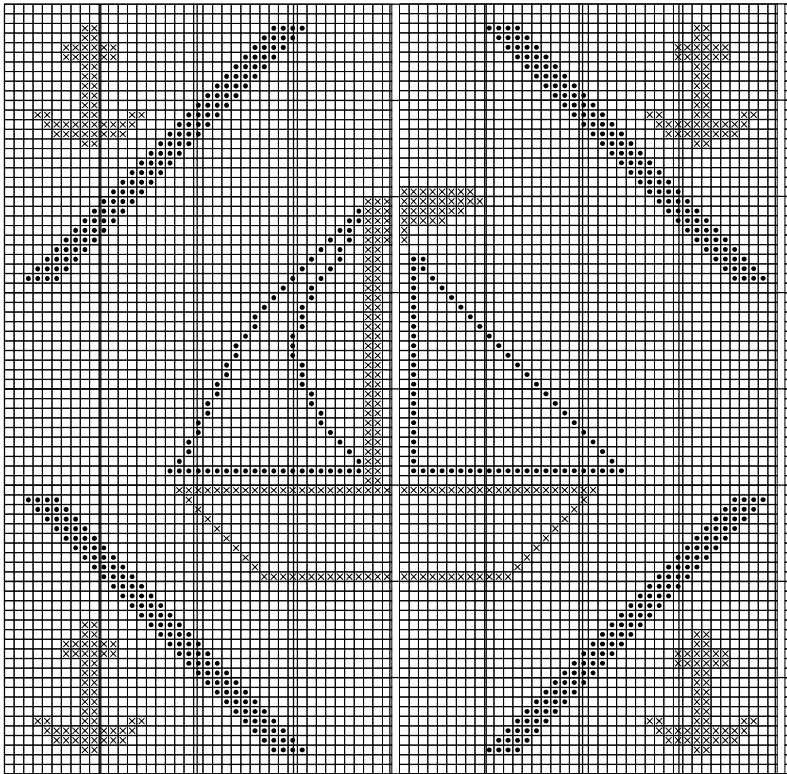
Note: Panel will have 3 sailboats. On Row 5 there will be 21 sc between each boat and 18 sc at ends; on Row 10 there will be 12 sc between widest part of each boat.

With tapestry needle and white, sew panels to top and bottom of center panel.



From Crochet Digest Magazine, Vol 18, No 1, Page 13, Copyright © 1998 Crochet Digest Magazine

Chart A



Joined Panels Border

Rnd 1: With H hook, attach white in any corner, ch 2, [hdc, ch 1, 2 hdc] in same st, hdc in each st and row end around, working [2 hdc, ch 1, 2 hdc] in each corner, join in 2nd ch of beg ch-2.

Rnds 2-5: Sl st to corner ch-1 sp, ch 2, [hdc, ch 1, 2 hdc] in same sp, *skip next hdc, hdc in each rem hdc to next corner, [2 hdc, ch 1, 2 hdc] in corner ch-1 sp, rep

from * around, join in beg ch-2, at end of Rnd 5 fasten off.

Checkerboard Border

Make 1 blue-and-white and 1 red-and-white

Note: Rows 3-8 are worked from right side only; fasten off at end of each row and reattach yarn at beg of each row.

Work over color not in use.

Row 1: With white and G hook, ch 193,

sc in 2nd ch from hook and in each rem st across, ch 1, turn. (192 sc)

Row 2: Sc in each sc across, ch 1, turn.

Row 3 (RS): With white sc in first 4 sc, change to color in last sc, *sc in next 4 sc, change to white in last sc, sc in next 4 sc, change to color in last sc, rep from * across, work last 4 sc in color, fasten off.

Rows 4-5: Attach white in first sc, ch 1, sc in each of first 4 sts, changing to color in last sc, *sc in each of next 4 sc **, changing to white in 4th sc, sc in each of next 4 sc, changing to color in 4th sc, rep across, ending last rep at **, fasten off.

Rows 6-8: Attach color in first sc, ch 1, sc in each of first 4 sts, changing to white in 4th sc, *sc in each of next 4 sc **, changing to color in 4th sc, sc in each of next 4 sc, changing to white in 4th sc, rep across, ending last rep at **, fasten off.

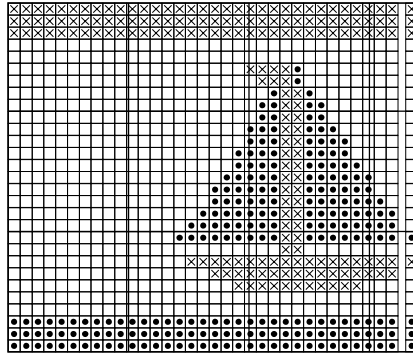
Rows 9-11: Attach white in first sc, ch 1, sc in each sc across, ch 1, turn, at end of Row 11 do not ch, fasten off.

Afghan Edging

Rnd 1: With H hook, attach white in any corner, ch 1, [2 sc, ch 1, 2 sc] in same st, sc evenly sp around, working [2 sc, ch 1, 2 sc] in each corner, join in beg sc.

This Graph is best viewed at 200% or more.

Chart B



Rnd 2: Sl st to corner ch-1 sp, ch 2, [hdc, ch 1, 2 hdc] in same sp, *sc in next st, tr in next st, rep from * across to next corner ch-1 sp, [2 hdc, ch 1, 2 hdc] in corner sp, rep from * around, join in 2nd ch of beg ch-2.

Rnd 3: Sl st to ch-1 sp, ch 1, [sc, ch 1, sc] in corner sp, [sc in next st, ch 1, sk next tr] rep around, working [sc, ch 1, sc] in each corner sp, join in beg sc, fasten off.

Push tr sts through to RS. Weave in loose ends. ❖